

Kansas Interagency Coordinating Council on Early Childhood Developmental Services / Kansas Interagency Coordinating Council

Meeting Minutes

Virtual

August 16, 2024

1:00 PM

Members Present (20 voting members)

Kathy Kersenbrock Ostmeyer, Chairperson & Service Provider

Lisa Collette, Vice-Chair & Insurance Commission Representative

Christie Wyckoff, for Melissa Rooker, Kansas Children's Cabinet and Trust Fund

Tricia Waggoner, Kansas Department of Health and Environment (KDHE)

Melissa Valenza, for Dr. Watson, Kansas Commissioner of Education,

Nichelle Adams, Kansas Dept. for Children and Families (DCF) childcare

Sydney Dringman, Kansas Dept. for Children and Families (DCF) foster

Diana Martinez, Head Start Representative

Hilary Crist, Service Provider Member

Susan Bowles, Service Provider Member

Ann Elliott, Service Provider Member

Erin Schuweiler, Service Provider Member

Monica Ross, Service Provider Member

Marites Altuna, Service Provider Member

Representative Susan Ruiz, Legislator

Courtney Hochman, Public Member

Kim Kennedy, Kansas Dept. for Children and Families (DCF) (Ex-Officio)

Lesli Girard, Families Together PTI (Ex-Officio)

Members Not Present

Chanda Gross, Medicaid Representative

Gary Henault, KDADS

Bronwyn Fees, KSU, incoming Board of Regents representative

Senator Renee Erickson, Legislator

Jennifer King, SEAC liaison (Ex-Officio)

Nonmembers Present

Stacy Clarke, KSDE SICCC Staff Person

Beccy Strohm, Early Childhood Admin. Asst.

Mikaela Ball, pending parent member

Elizabeth Brunscheen-Cartagena, Past parent member

Tiffany Bartley, KCSL Healthy Families
Amanda Petersen, KSDE Direction of Early Childhood
Barbara Kramer, KITS trainer
Stephanie Wills, Part C Coordinator I.T.S of SW KS

Call to order:

Chair Kathy Kersenbrock Ostmyer called the meeting to order.
Introductions were made by all present (it was noted that there was a quorum).
The SICC Mission was read.

Meeting Minutes:

The minutes from June 2024 meeting were reviewed and approved.
Motion made by Ann Elliott to accept minutes
Seconded by Lisa Collette
Motion carried – All members voted yes

Meeting agenda:

The agenda for August 2024 was reviewed and approved with revisions.
Lisa Collette moved to accept the agenda
Ann Elliott seconded the motion
Motion carried – All members voted yes

Public Comment:

No request came in for public comment.

Local Program:

Stephanie Wills, Infant Toddler Coordinator at KS03 SW KS Early Childhood Coalition, Russell Child Development Center, shared the successful PD funded by the SICC grants to LICCs. Cari Ebert came for 2 days. Day 1- Autism and Sensory needs. Day 2 was Screen time and the importance of play. 158 participants including KS01 Arrowhead West providers. There will be a book study beginning soon based on the information learned during the training. All members of the LICC will be invited to join the book study. They are exploring funding ideas for the books.

[Home - Cari Ebert](#)

Books:

[A Moving Child](#)

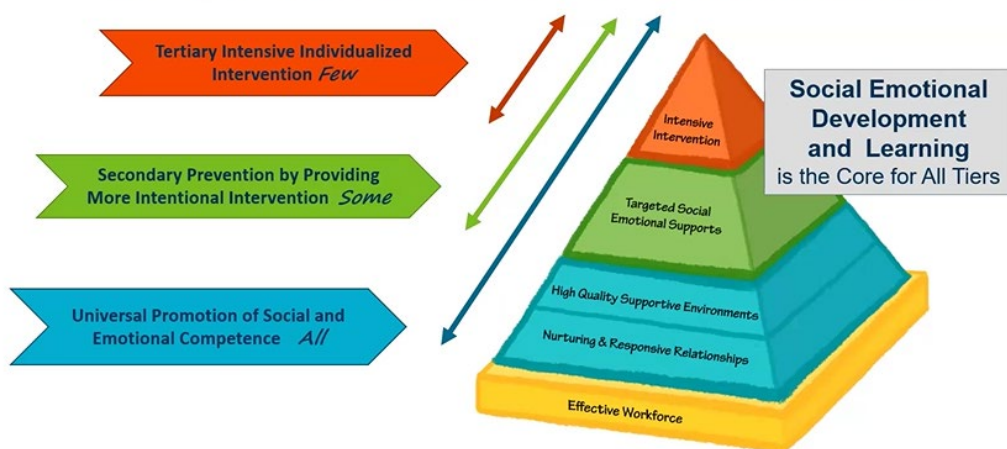
[Uniquely Human](#)

State Program:

Kathy Bigelow, associate research professor at KU - Juniper Gardens, pyramid model for social emotional development in early childhood.

Ensure each and every child has the support, experiences, relationships, opportunities, guidance, and instruction to thrive in their social-emotional development and learning

Pyramid Model for Promoting Social and Emotional Competence in Infants and Young Children



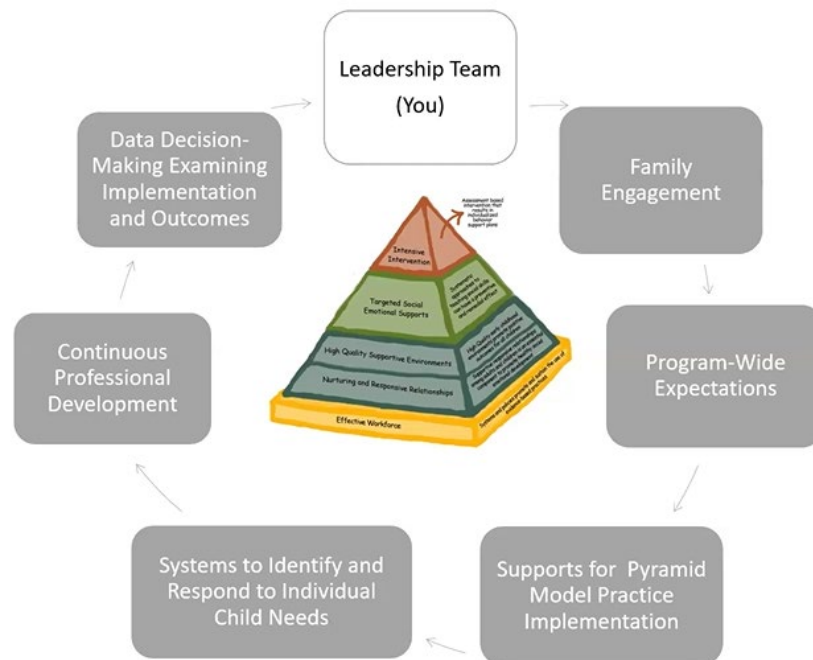
Similar to MTSS & PBIS

- **When:**
 - Children are engaged
 - Children know the routines and expectations
 - Adults have time to have meaningful conversations with children
- **Children are less likely to have challenging behavior**
- Self-regulation, expressing and understanding emotions, problem solving, and developing social relationships - social emotional learning for ALL
- Explicit instruction for Some
 - Increased opportunities for instruction, practice, feedback
- Family partnerships
- Progress monitoring and data decision-making

Behavior is Communication



- I am scared
- I need help
- I don't want to play that game
- This activity is boring
- I don't understand what you want me to do
- I don't know how to play with those children
- I am frustrated
- I want to play by myself
- I don't feel good
- I am tired



It takes intentional practice and system wide support to be successful.

4 Essential Structures Supporting State-Wide Implementation



Amanda Petersen, KSDE Director of Early Childhood, gave an update on ASQ usage in Kansas. Discuss developmental screenings.

- Asking for volunteers to assist with determining what ASQ data is relevant and most useful.
- The ASQ is developmental screenings for children from 1 month to 72 months. Checks on the overall development of various areas.
- All incoming kindergarten students have a caregiver complete ASQ screenings when entering kindergarten.
- The screener is used to develop relationships with families and to impact classroom instruction to meet the needs of students.

Diana M. asked what personal information is shared in the state ASQ Hub online systems.

- Infant toddler Hub: Local Part C coordinators can see personally identifiable information (PII) and results.
- KSDE Hub: provides results without any personally identifiable information. The KSDE Early Childhood team along with some KSDE I.T. staff have access to the overall results.
- Brookes Publishing also has access to PII and results in ALL accounts.

Parent member shared that she hasn't ever received the results. Other families she knows have also had the same experience. The ASQ and the questions have not been explained to her. The reason behind the questions isn't always understood.

Inquiry if the ASQ Online system can identify duplicate child profiles? No

Will the new EC database be able to track ASQs? Unknown at this time

All in for Kansas Kids Strategic Plan - [2024 Needs Assessment | Kansas Children's Cabinet and Trust Fund \(kschildrenscabinet.org\)](#)

3 Pillars, 15 Goals, 111 Actions, Indicators of Progress

Strategic Plan Overview



Ecosystem

- State and local collaboration to meet child and family needs.
- Communities connect families to the right resources at the right time.
- Use data to measure impact and improve programs.
- Expand resources to help increase capacity, including public-private partnerships.

Workforce

- Increase compensation and financial sustainability.
- Prioritize professional advancement and development opportunities.
- Grow the overall early childhood workforce capacity.
- Improve quality of environments and services provided by the early childhood workforce.

Children & Families

- Prioritize well-being and mental health of children and families.
- Engage families in meaningful ways to improve programs.
- Invest in the meeting the basic needs of families with young children.
- Help families make informed decisions about – and access – the services their children need.

Who can see your viewing activity? X

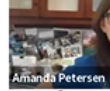
All In For Kansas Kids strategic plan Pillar 1: Ecosystem, Goal 6 Actions



- **Action 6.1:** Strengthen partnerships between elementary schools and early childhood providers. Identify effective kindergarten transition methodologies across the state and nationally, with a focus on improving support for children living in rural and frontier regions.
- **Action 6.4:** Expand uptake of the statewide ASQ Online system among service providers who directly support families with children ages birth to 5 to ensure families get appropriate access to developmental screening and early intervention services.
- **Action 6.5:** Increase routine screening, referral practices, and reimbursements—where appropriate—within programs that directly support young children birth to 5. Identify and address geographic gaps in screening services to ensure families in rural areas have equal access.

Who can see your viewing activity? X

All In For Kansas Kids strategic plan **Pillar 2: Early Childhood Workforce & Environments**



- Goal 4: Support high quality programming and resources for expecting families and children in all birth to age 5 environments so they can reach appropriate developmental goals.
 - Action 4.3: Support local networks, such as Local Interagency Coordinating Councils, that champion and increase family and provider access to the statewide ASQ Online system especially in rural areas where availability may be more limited.

Who can see your viewing activity? X

All In For Kansas Kids strategic plan **Pillar 3: Experiences of Children & Families**



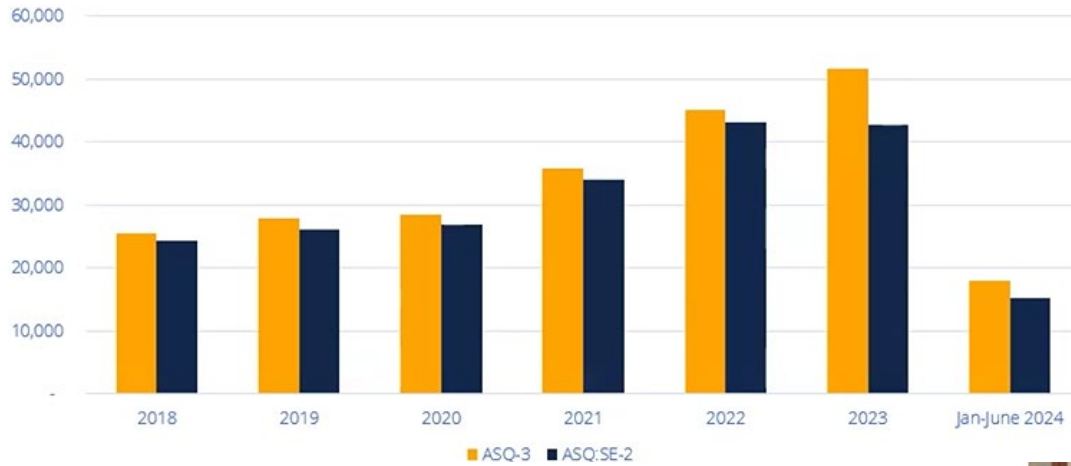
- Goal 2: Build awareness of the services available to help families make informed decisions in support of their child's interests, healthy development, and learning.
 - Action 2.1: Distribute information on healthy development and screening within programs that serve expecting families and those with young children, including family resource centers, maternal health providers, and partners in the broader ecosystem (e.g. public play places, physical health settings, elementary schools).
 - Action 2.3: Co-create and publicize resources to increase family understanding of healthy development milestones and how to request screening services.

When you think about work to expand access to developmental screening in Kansas how are we doing?

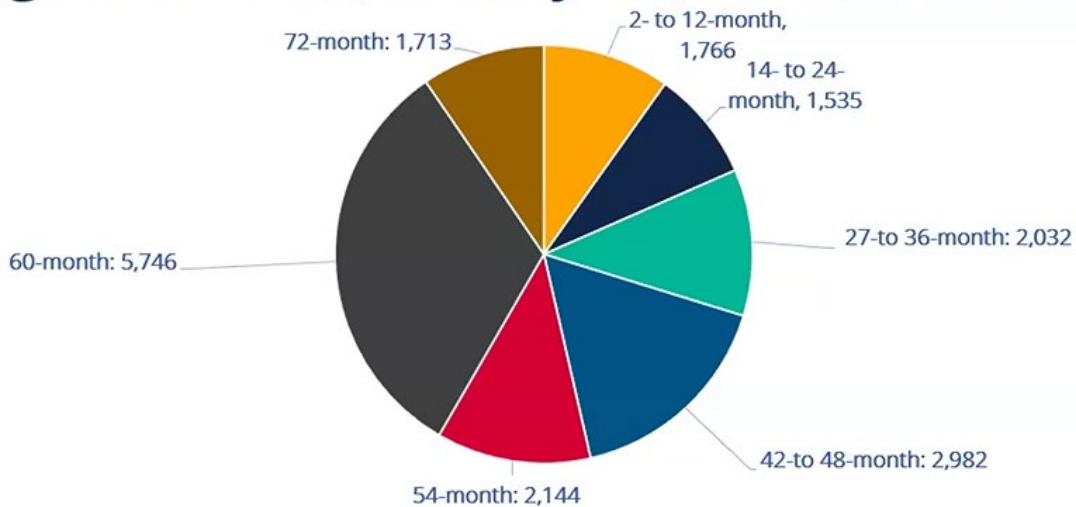
- Discouraging to know that results aren't being shared with families
- It's like getting your blood pressure checked, you can't do it too much
- Are referrals happening if concerns are identified? Unknown
- Another member expressed concern about the screening not being shared. She's wondering if the intervention that may be put in place in schools are being shared with families.

- Wondering if referrals can be tracked based on an ASQ screening. Using the IRIS data management system may facilitate linking the ASQ with referrals.

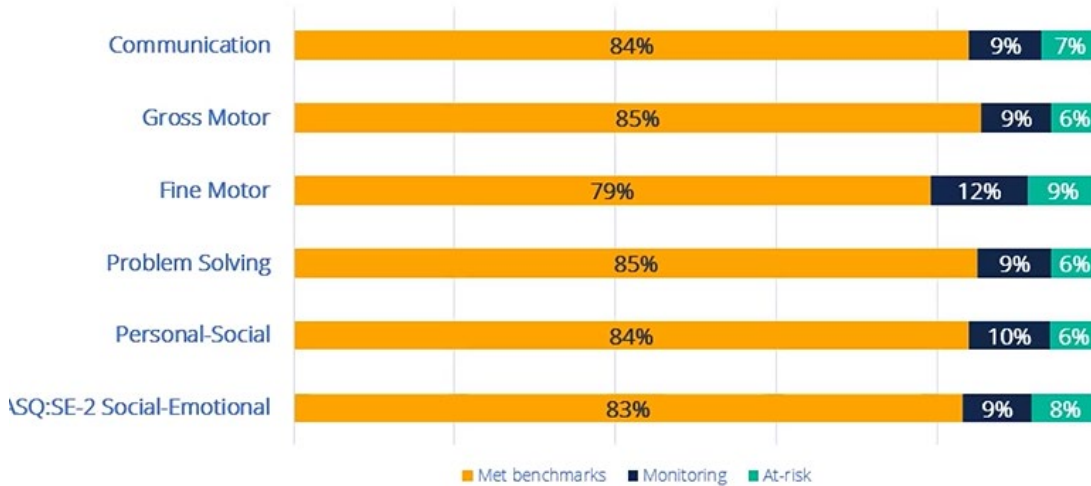
Number of Kansas children screened



Kansas children screened by ASQ-3 age interval, January 1- June 30, 2024



ASQ-3 and ASQ:SE-2 Results, All Ages January 1 to June 30, 2024



Asked for volunteers to look at the data and decide what data is most meaningful to share, specifically how to group ages together when sharing the data. Contact Amanda apetersen@ksde.org if you are interested in meeting 1-3 short meetings to discuss this.

Question: When does fine motor beginning declining? That would be interesting data to look at.

Introduction of ASQ for home visitors and community health providers at the end of August. It was noted that the training should stress that results MUST be shared with families.

Question: When a child has significant delays, is it necessary to ask families to complete the screenings? This is discouraging to families. Schools have the option to not ask families to complete the ASQ if their child has already been completely evaluated and/or identified. Speaking for families with children with significant delays, it is a discouraging experience.

Action item:

Due to time restraints,

Courtney Hochman moved for written reports to be provided.

Seconded by Lisa Collette to have agency and committee reports emailed to Stacy to distribute to members instead of verbal reports.

All agreed.

SICC business items:

Review and approval of the 2023-24 Annual SICC Report

Ann Elliott moved to accept the Annual Report with noted corrections

Courtney Hochman seconded the motion

Motion carried – All members voted yes

SICC Grants to LICCs

Is there enough money in the SICC account to cover \$2000 grants for all 31 LICCs? There is a large reserve of money due to the lack of traveling by staff and members of the SICC since COVID and meetings became mostly virtual. \$130,000 carried over from last fiscal year. Estimated to have \$112,000 at the beginning of FY2025.

Susan Bowles moved to offer grants for 2024-25, for a maximum amount of \$2000.

Tricia Wagonner seconded the motion

Motion carried – 1 member abstained because CCDF funds are used for this work and they handle that agreement.

SICC family member participation policy

It has been recommended in the 2020 All in for Kansas Kids strategic plan and by Technical Assistance for Excellence in Special Education (TAESE) that the SICC should compensate family members for expenses incurred from attending SICC meetings. It is in the Kansas statute and Federal statute that this practice is encouraged and allowed. Both are referenced on the proposed policy.

Action item:

Tricia Wagonner moved postpone this approval until the next meeting.

Christie Wychoff seconded the motion.

Motion carried – All members voted yes

The draft of the policy is attached.

OSEP visit update:

The Department of Justice had a finding for the Wichita School District. OSEP – Office of Special Education Programs a division of the U.S. Department of Education.

[Office of Public Affairs | Justice Department Secures Agreement with Kansas School District Regarding School Discipline, Law Enforcement and Seclusion and Restraint | United States Department of Justice](#)

The member of OSEP team interviewing the SICCC members inquired with the about the DOJ settlement agreement with Wichita School District.

Amanda Peterson, KSDE Director of Early Childhood: *We are certainly very aware of that report. It came out in July, and we are being transparent. We visited with Tricia Waggoner and the team at KDHE when it came out. We've carefully reviewed it. (The link to the agreement was shared in the chat.) The heart of the issue or the concern is that in USD 259, there were concerning practices relating to racially disparate treatment when it comes to discipline and the use of seclusion and restraint primarily in the high school and alternative school settings. So certainly, very concerning findings and certainly a very concerning report. Also, as we have been reviewing it and partnering with our teammates here at the Kansas State Department of Education's Special Education team. To my knowledge, there's also not something where we are aware of a connection to part C or to early intervention services. It is helpful to remember that in Sedgwick County, USD. 259 is not the part c provider. If we are interested in hearing more, I'd be glad to invite our special education, Director Burt Moore, to a future meeting to share more. If any of you are interested in more information, we're glad to share.*

Tricia Waggoner, Part C Coordinator: *I would add that we have been in touch with Rainbows United, the Sedgwick County infant-toddler team about this. We've had discussions about how to help parents if they have concerns as they're transitioning out of part C into part B and into the school settings.*

Question: When we are looking at state data, where are we falling in relation to the national data related to seclusion and restraint? Unknown at this time.

Kathy K.O., chairperson noted that if there is an increasing trend that this is very concerning especially as it relates to special populations.

LICC Support Committee –

The LICC Fall Retreat – November 1, 2024

Please share with all your team members.

*Behaviors are Just the Tip of the Iceberg and
Promoting Language Development with PC TALK*

Written Report Shared

DMS Report

KDHE has been meeting regularly with the OSEP team. Things are going well. KDHE has been providing a lot of documents to OSEP. There is still a chance that other documents could be requested. OSEP will be in person in Kansas during Labor Day week.

Approximately 10-12 SICCC members were able to attend.

OSEP noted the great job that the Kansas SICCC does at facilitating communication between the various agencies.

We sent well wishes to E. for his spine surgery.

Adjournment:

Motion made by Ann Elliott to adjourn the meeting.

Motion seconded by Susan Bowles.

Meeting adjourned at 3:33 pm by Kathy Kersenbrock Ostmeyer

All in favor

Written Reports attached (2)



The mission of the Kansas Coordinating Council on Early Childhood Developmental Services is to ensure that a comprehensive service delivery system of integrated services is available in Kansas to all children with, or at risk of, developmental delays from birth through age five and their families.

Committee Report

Detailed written reports should be provided for distribution on the Monday prior to the SICC Meeting.

Meeting Date: Thursday, August 8, 2024

Name of Committee: LICC Support Committee

Members Present: Stacy Clarke, Courtney Hochman, Jennifer Oborny, Marites Altuna, Hilary Crist, and Susan Bowles

- **Provide a brief description of new/ongoing activities of the committee.**
 - Plans for the Fall LICC Retreat continue to move forward. The Retreat will continue to be provided remotely. This year it will be held on Friday, November 1st from 8:30 a.m. to 12:30 p.m.
 - Presentations have been selected and are:
 - Behaviors are Just the Tip of the Iceberg - Ingrid Pohl
 - PC Talk (Promoting Communication) - Juniper Garden's (Dale Walker & Kathy Bigelow)

- Stacy will check with Juniper Garden's regarding time preference. Suggested times for the presentations were: Presentation 1: Behaviors are Just the Tip of the Iceberg and Presentation 2: PC Talk.

- This year, our committee will try to make the handouts available electronically for participants prior to the conference. Presenters have been also asked to provide 3 to 4 break-out session questions for the facilitators. Presentations, hand-outs and questions are due by October 1st.

- Amanda Perersen with KSDE will give an update on the Governor's Task Force for Early Childhood Transitions.
- Future topics continue to focus on social-emotional and not so much on academics, update on KS Early Learning Standards, strategies to improve parent engagement/motivation to promote social-emotional learning in the home, working with children with autism, a smooth transition process from Part C to Part B (can KDHE and KSDE work together at the state level to provide both programs with appropriate practices and upholding legal issues across the state regarding transition and extended school year).

- **Provide a highlight of committee initiatives on the horizon or ready to be acted upon.**

- Retreat Schedule:
 - 8:30 - 8:40: Welcome (enough time?) - Stacy Clark

 - 8:40 - 9:10: Update on the Governor's Task Force for Early Childhood Transitions
- Amanda Petersen

 - 9:10 - 10:25: 1st Presentation

 - 10:25 - 10:40: Break-Out Session #1

 - 10:40 - 10:50: Personal Break

 - 10:50 - 12:05: 2nd Presentation

 - 12:05 - 12:20: Break-Out Session #2

 - 12:20 - 12:30: Closing Remarks and Instructions - Stacy Clarke

- Save the date went out on July 26th. Everyone was asked to share this email with their team and coworkers. Stacy reported that some emails bounced back with a notice that they were on vacation. Stacy will send out again to make sure the Save the Date email didn't get buried in the inboxes.

- Registration - Opening TASN registration on Tuesday September 3rd. Follow-up registrations will go out the beginning of October and middle of October.

- Stacy will gather brief bios from the presenters and brief descriptions about the presentations for registration.

- Each LICC Support Committee Member was asked to be a facilitator for the Retreat. Optimal numbers of participants for the break-out sessions are approximately 10-12 individuals. We will wait and see what the registration numbers are and then ask other coworkers that are attended to help facilitate if need be.

- Final survey/evaluations will also go out through TASN: Stacy and Susan will meet to look at questions of previous Retreats and look into whether TASN can incorporate them into this final survey. Stacy and Susan will set-up a remote visit to look at these questions. All committee members will be invited, but don't have to attend, only if convenient and want to.

- Stacy will contact KDADs to get prior approval for KDHE CEUs. She will also contact KCCTO and Ingrid for assistance getting CEUs for child care licensing.

- The LICC Committee Meetings will be held on Thursdays remotely at 3:45. Dates for these meetings are: **Committee Members, please put these in your calendars. =)**
July 11th, August 8th, September 12th, October 10th. Maybe October 24th -

week

before. November 14th, December 12th.

- LICC Committee members are reminded about the meeting via text messaging and/or e-mail. Committee members emails and text capabilities are below. Please use these only for LICC Support Committee purposes.

COMMITTEE MEMBERS AND CONTACTS:

Susan Bowles: gslbowles@gmail.com (785) 656-1125

Marites Altuna: mmaltuna@kssdb.org (913) 645-5645

Elizabeth Brunscheen-Cartagena: lizb@ksu.edu (316) 209-9521

Stacy Clarke: sclarke@ksde.org (785) 275-2050

Hilary Criss: hilary@cristelc.com (252) 619 5299

Ann Elliot: ann@frcpittsburg.org (620) 249-3954

Courtney Hochman: hochmancj@gmail.com (785) 317-4299

Jennifer Oborny: joborny@nkesc.org (785) 623-8792

Monica Ross: Monica.Ross@itsjc.org (913) 221-3968

Erin Schuweiler: eschuweiler@kssdb.org (913) 343-0724

Is there a specific request of the Council, need for further discussion, or action by the Council?

- If you have suggestions or comments for the LICC Support Committee, please feel free to contact any of the committee members or Susan Bowles at 785-656-1125.
- Stacy would like the LICC Support Committee to look over information she is compiling to help LICC make parents and community members feel welcome and involved with the LICC. She asked members feel free to share their thoughts and suggestions with this document. She will attach this to the remote meeting invite that will go out the Monday before the meeting.
- No other action is needed at this time.



The mission of the Kansas Coordinating Council on Early Childhood Developmental Services is to ensure that a comprehensive service delivery system of integrated services is available in Kansas to all children with, or at risk of, developmental delays from birth through age five and their families.

KCCTF Agency Report

Detailed written reports should be provided for distribution on the Monday prior to the SICC Meeting.

- **Provide a brief description of new/ongoing activities related to children age five or under and their families.**



United to Transform Community Sensemaking Events

Join us!

Be a part of community conversations about substance use and the impact of stigma in your community. Together we will seek a better understanding of how to transform our community responses in ways that meet individual and community needs.

We'll be in Manhattan on August 8th and Pittsburg on August 23rd for food, conversation, and action planning. Register at unitedtotransform.com/sensemaking-tour.

United to Transform is a targeted statewide project intended to identify means of reducing the enormous toll of substance use disorders in the lives of Kansans. The project is initiated by Sunflower Foundation, funded by Kansas Fights Addiction Grant Review Board, and conducted by CPPR.

- **Provide a highlight of agency initiatives on the horizon or are ready to be initiated.**
On August 2, the Cabinet approved ~\$1.8M in Community-Based Child Abuse Prevention (CBCAP) federal funds for FFY2025 including one new grantee, Barton County Health Department's Family Crisis Center, and 2 grantees that were funded by ARPA funds, which are ending, Lawrence-Douglas County Health Department's Comenzando Bien and Southwest Kansas Library System.
- **Does the agency need the Council to act in its advise and assist role?**
No



Fall LICC Retreat

This is an wonderful learning opportunity for anyone that works with children birth to age 5.

Virtual on Friday, November 1, 2024, 8:30 am - 12:30 pm

- An update on Early Childhood in Kansas from Amanda Petersen, KSDE Director of Early Childhood
- *Behaviors are Just the Tip of the Iceberg*, Ingrid Pohl, Infant Toddler Professional Development Specialist—KCCTO
- *Promoting Communication Tools for Advancing Language in Kids— PC TALK*, Dr. Dale Waker and Dr. Kathy Bigelow, associate research professors at Juniper Gardens Children's Project

FREE REGISTRATION: [TASN Events](#) | [KSDE TASN](#)

Preapproved credits for child care providers #2024-000182-001 and SLP P(62821)

Sponsored by the State Interagency Coordinating Council (SICC)

